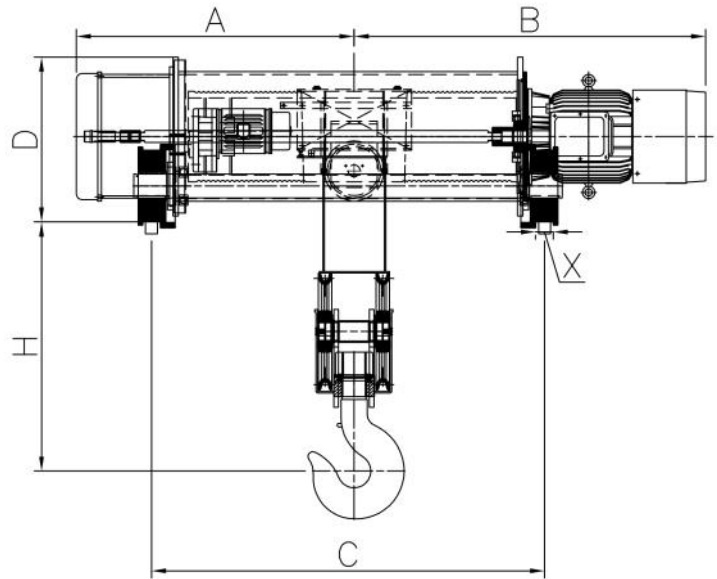
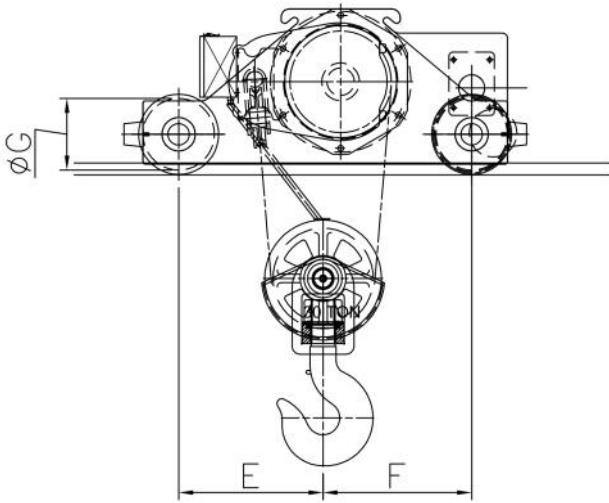
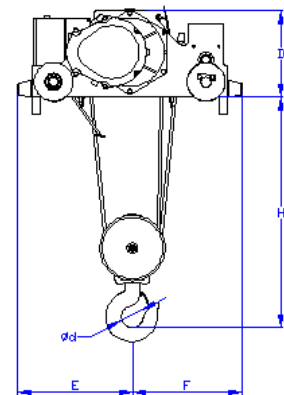
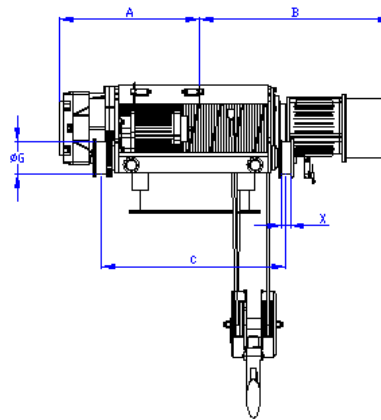


Type		2.8RF-DT		3RF-DT		5RF-DT		7.5RF-DT		10RF-DT		15RF-DT		20RF-DT		
Capacity (Ton)		2.8		3		5		7.5		10		15		20		
Lift (M)		6、8、12														
Hoist Speed (M/min)	50HZ	5.3		5.3		6		4.2		4.3		4.2		3.5		
	60HZ	6.3		6.3		7.2		5		5.2		5		4.2		
Hoist Motor (Kw)		3.75		3.75		7.5		7.5		11		18.5		18.5		
Trolley Speed (M/min)	50HZ	14				15				12						
	60HZ	17				18				15						
Trolley Motor (Kw)		0.37		0.37		0.75		0.75		1.5		1.5		2.2		
Dia. Of Rope (mm)		Φ12	Φ10	Φ12	Φ10	Φ16	Φ12	Φ14	Φ16	Φ18	Φ20					
Reeving Type		2/1	4/2	2/1	4/2	2/1	4/2	4/2								
Approximate Dimensions (unit : mm)	A	6M	455	530	455	530	490	570	625	725	800	820				
		8M	455	580	455	580	490	625	675	775	855	880				
		12M	530	710	530	710	570	725	805	910	980	1030				
	B	6M	625	700	705	780	790	870	930	1020	1060	1090				
		8M	625	700	705	830	790	930	980	1070	1115	1140				
		12M	700	880	780	960	870	1030	1105	1205	1220	1290				
	C	6M	600	750	600	750	600	750	850	900	950	950				
		8M	600	850	600	850	600	850	950	1000	1050	1000				
		12M	750	1100	750	1100	750	1050	1250	1250	1250	1250				
		D	415		415		480		500		550		680		680	
		E	380		380		440		430		490		575		575	
		F	430		430		460		500		610		715		715	
		ΦG	120		120		150		180		200		220		250	
	H	630		630		750		720		830		920		1050		
	Φd	60		60		75		85		100		120		140		
	X	44		44		44		52		52		58		58		
Net Weight (Kg)	6M	300	330	330	330	480	520	650	850	1100	1350					
	8M	310	350	310	350	490	560	700	900	1160	1430					
	12M	330	380	330	380	520	620	800	1000	1280	1550					



Type		25RF-DT	30RF-DT		
Capacity (Ton)		25	30		
Lift (M)		9 、 12	9 、 12	12	
Hoist Speed (M/min)	50HZ	3	3.1	2.3	
	60HZ	3.6	3.7	2.8	
Hoist Motor (Kw)		18.5	22.5	22.5	
Trolley Speed (M/min)	50HZ	12	12	12	
	60HZ	15	15	15	
Trolley Motor (Kw)		2.2	2.2	1.1 x 2	
Dia. Of Rope (mm)		Φ22	Φ25	Φ20	
Reeving Type		4/2	4/2	6/2	
Approximate Dimensions (unit : mm)	A	9M	969	1167	*
		12M	1054	1167	1038
	B	9M	1329	1279	*
		12M	1414	1475	1705
	C	9M	1305	1454	*
		12M	1475	1650	1780
	D		690	690	1000
	E		606	606	1130
	F		624	624	670
	ΦG		250	300	300
H		1044	1044	1384	
X		75	75	75	



Type		2.8RS-DT	3RS-DT	5RS1-DT	5RS2-DT	10RS-DT	15RS-DT	20RS-DT	30RS-DT	
Capacity (Ton)		2.8	3	5	5	10	15	20	30	
Lift (M)		6、8								
Hoist Speed (M/min)	50HZ	3.2	3.2	3	4.6	3	3	2.3	2.1	
	60HZ	3.8	3.8	3.6	5.6	3.6	3.6	2.8	2.5	
Hoist Motor (Kw)		2.2	2.2	3.75	5.5	7.5	11	11	18.5	
Trolley Speed (M/min)	50HZ	14			15		12			
	60HZ	17			18		15			
Trolley Motor (Kw)		0.37	0.37	0.75	0.75	1.5	1.5	2.2	2.2	
Dia. Of Rope (mm)		Φ12	Φ12	Φ12	Φ12	Φ16	Φ18	Φ20	Φ25	
Reeving Type		2/1	2/1	4/1	4/1	4/1	4/1	4/1	4/1	
Approximate Dimensions (unit : mm)	A	6M	455	455	530	530	625	750	780	910
		8M	480	480	580	580	675	825	855	985
	B	6M	630	630	780	780	925	1050	1080	1150
		8M	655	655	830	830	975	1130	1180	1225
	C	6M	600	600	750	750	900	950	1000	1100
		8M	650	650	850	850	1000	1100	1150	1250
	D	415	415	450	450	500	580	580	700	
	E	380	380	430	430	450	625	650	850	
	F	430	430	470	470	550	610	610	650	
	ΦG	120	120	150	150	200	220	250	285	
	H	700	700	700	700	900	1000	1050	1150	
	Φd	60	60	75	75	100	120	140	140	
X	44	44	44	44	52	58	58	75		
Net Weight (Kg)	6M	280	280	370	370	710	1180	1500	1750	
	8M	300	300	415	415	750	1280	1400	2000	